

**UNITEC**  

---

**G R O U P**

**WE SERVE THE INDUSTRY**

# Company Profile

Head Office Barsinghausen , Deutschland



- **Foundation of Unitec Motoren in 2000**
  - High Voltage Motors up to 20 MW
  - Standard Low Voltage Motors
  - Special Motors for all applications
  - Tailor Made Motors according to specification
  
- **Foundation of Unitec Projects & Engineering GmbH in 2007**
  - Worldwide Sales of System Components
  - Design and Supply of electric Drive systems
  - Turn Key Solutions & Project Handling

Unitec Group  
Roentgenstrasse 1 B  
D-30890 Barsinghausen  
Tel. +49 – 5105 – 77879 0  
Fax +49 – 5105 – 77879 20  
[www.unitec-group.de](http://www.unitec-group.de)



## About Us

The company **Unitec Motors** was founded in 2000 as a specialist for the supply of products of drive Industry and has been established as a medium-sized companies in the market.

The main activity is the delivery of high-voltage motors, low voltage motors, tailor made motors to customer requirements or special motors, transformers and generators.

**Unitec** has an internationally-developed distribution system, where all activities will be co-ordinated and controlled by an experienced team from the head office in Germany.

To serve the requirements of the international market, as well as to execute complete projects **Unitec Projects & Engineering GmbH** was founded in 2007.

Our team of Engineers and high skilled specialists is at your disposal and will guide you to find solution for your requirement. We offer out of one hand service and turn key delivery on request.

Unitec Group  
Roentgenstrasse 1 B  
D-30890 Barsinghausen  
Tel. +49 – 5105 – 77879 0  
Fax +49 – 5105 – 77879 20  
[www.unitec-group.de](http://www.unitec-group.de)

## **Our Products:**

### High Voltage Motors

High Voltage Motors with Squirrel cage rotor or slip ring rotor will be build for nominal voltage between 3 KV and 11 KV

Custom constructions deviating from these specs are possible for up to 13.8 KV in nominal voltage. Standard frequencies are 50 and 60 Hz.

#### **High-voltage motors will be build with the following standard configurations:**

IM B3 configuration for horizontal installation

IM V1 configuration for vertical installation

For special mounting arrangement please contact us !

#### **Standard types of cooling systems:**

IC 411 (ribbon-cooled)

IC 611 (using air-air heat exchanger)

IC 81 W (using air-water heat exchanger)

IC 01 (open circuit air-cooled)

#### **Ambient conditions according to IEC standard (deviations from these, while by all means possible, need to be specified):**

Ambient temperature 40°C max.

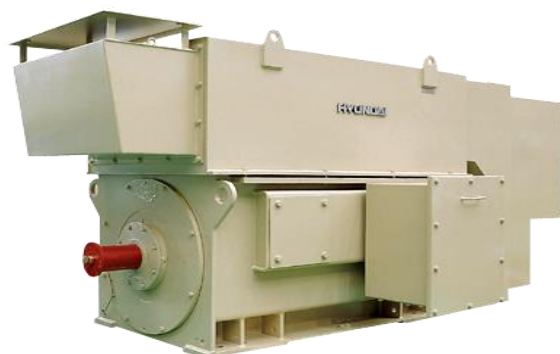
No direct exposure to sunlight

Relative humidity 80% max.

Installations at elevations of 1,000 m above sea level or less

Voltage stability:  $\pm 5\%$

Frequency stability:  $\pm 2\%$



Unitec Group  
Roentgenstrasse 1 B  
D-30890 Barsinghausen  
Tel. +49 – 5105 – 77879 0  
Fax +49 – 5105 – 77879 20  
[www.unitec-group.de](http://www.unitec-group.de)

## Low Voltage Motors

Our Low Voltage Motors will be built in standard version IE2, IE3 and also IE4 .  
Three phase low voltage motors can be supplied as squirrel cage induction motors or slip ring motors.

Please refer to our low voltage motor catalogue.

### **Standard degrees of protection:**

- IP 55 (fully enclosed)
- IP 23 (open construction, open circuit air-cooled, drip-proof, suitable for indoor installation only)

### **Main Applications for our Low Voltage squirrel cage Motors are:**

- Blower & Compressors
- Pumps
- Fans

### **Main Applications for our Low Voltage slip ring Motors are:**

- Mills of all kinds
- Cranes
- Blowers
- Conveyor belts



Unitec Group  
Roentgenstrasse 1 B  
D-30890 Barsinghausen  
Tel. +49 – 5105 – 77879 0  
Fax +49 – 5105 – 77879 20  
[www.unitec-group.de](http://www.unitec-group.de)

## Low Voltage Frequency Inverter

Low Voltage Frequency Inverter will be supplied as completely wired cabinet unit ready to use or stand alone units for wall mounting. They meet the international rules and standards

### **Standard Ratings:**

- Connection Voltage 230 – 690 V
- Nominal Rating between 1 kW and 2.500 kW
- Nominal Frequency 50 – 60 Hz

### **Main Applications of our Low Voltage Frequency Inverter:**

- Pump Drives
- Blower Drives
- Transportation and Elevation Drives

### **Possible special Execution of our Low Voltage Frequency Inverter:**

- 12-pulse Execution
- 18-pulse Execution
- Active Front End
- Equipped with Motor protecting EMV Filter



Unitec Group  
Roentgenstrasse 1 B  
D-30890 Barsinghausen  
Tel. +49 – 5105 – 77879 0  
Fax +49 – 5105 – 77879 20  
[www.unitec-group.de](http://www.unitec-group.de)

## Medium Voltage Frequency Inverter

Medium Voltage Frequency Inverter will be supplied as completely wired cabinet unit ready to use in PWM Technology.  
They meet the international rules and standards

### **Standard Ratings:**

- Connection Voltage 3.000 – 11.000 V
- Nominal Rating between 200 kW and 10.000 kW
- Nominal Frequency 50 – 60 Hz

### **Main Applications of our Medium Voltage Frequency Inverter:**

- Pump Drives
- Blower Drives
- Fan Drives
- Transportation and Elevation Drives

### **Development Advantages of our Medium Voltage Frequency Inverter:**

- Execution with 1700 V IGBTs
- Efficiency over 97%
- Diode Rectifier ensures Power factor > 95%
- Input Isolation Transformer included in the drive package



Unitec Group  
Roentgenstrasse 1 B  
D-30890 Barsinghausen  
Tel. +49 – 5105 – 77879 0  
Fax +49 – 5105 – 77879 20  
[www.unitec-group.de](http://www.unitec-group.de)

## Supply of complete solutions

**Unitec** is your contact for engineering, delivery and settlement of entire project with a focus on electric drive technology

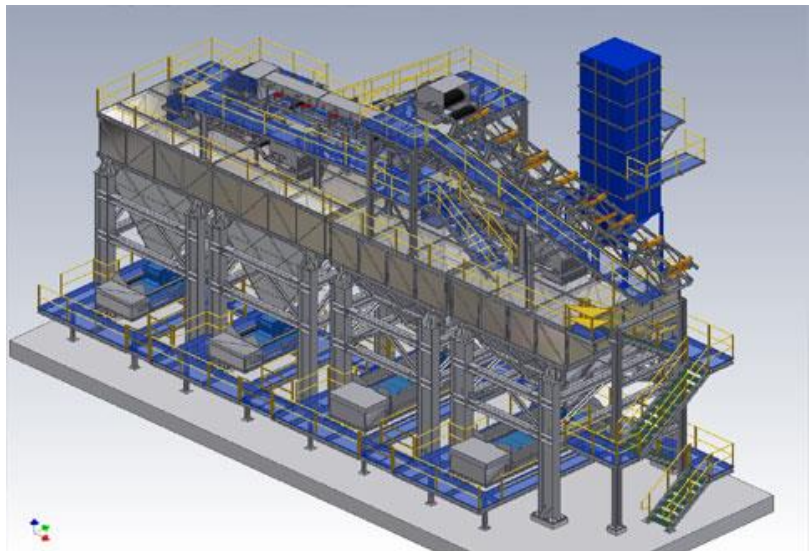
Together with our system partner we provide turn key solutions out of one hand.

### **Scope :**

- Consulting
- Engineering
- Solutions
- Supply of System components
- Installation
- Commissioning
- Turn Key supply

### **Our customers :**

- Steel works
- Cement factories
- Power Utilities
- Pump stations
- OEM's



Unitec Group  
Roentgenstrasse 1 B  
D-30890 Barsinghausen  
Tel. +49 – 5105 – 77879 0  
Fax +49 – 5105 – 77879 20  
[www.unitec-group.de](http://www.unitec-group.de)



## Service

No matter what kind of support you require in terms of drive technology, we are here to serve your! This includes, among other things:

- **Hire equipment** to bridge downtimes
- **Renting** for Testfields
- **Start-up specialists**
- **Specialists** for trouble-shooting on location
- **Mobile technology** to remedy failures on location
- **Trial runs** at qualified test fields

Our World Wide service is available 24 hours a day.



Unitec Group  
Roentgenstrasse 1 B  
D-30890 Barsinghausen  
Tel. +49 – 5105 – 77879 0  
Fax +49 – 5105 – 77879 20  
[www.unitec-group.de](http://www.unitec-group.de)

## Reference projects

### Pumping Stations

2002 Project China            Water Treatment Plant Project

- 6 x 315 kW, 1.500 rpm Regular water Pump Drives

2005 Project Bahrain        Power Plant Project

- 4 x 1.630 kW, 424 rpm Feed water Pump Drives
- 6 x 490 kW, 1480 rpm, Aux. Pump Drive

2006 Project Bahrain        Power Plant Project

- 3 x 4.100 kW, 424 rpm, Cooling Water Pump Drives

2006 Project Syria            Irrigation Pumping Station Project

- 13 x 250 kW, 1.500 rpm, Regular Water Pump Drives

2006 Project K.S.A.          Irrigation Pumping Station Project

- 4 x 500 kW, 1.752 rpm, Regular Water Pump Drives

2007 Project Bahrain        Power Plant Project

- 1 x 1.630 kW, 424 rpm Feed water Pump Drives

2008 Project UAE            Desalination Plant Project

- 5 x 4.150 kW, 423 rpm Cooling water Pump Drives

2008 Project Chile            Power Plant Project

- 3 x 675 kW, 1.488 rpm Condensing water Pump Drives

2008 Project Chile            Power Plant Project

- 3 x 750 kW, 1.488 rpm Condensing water Pump Drives

2008 Project UAE            Desalination Plant Project

- 1 x 3.350 kW, 596 rpm Cooling water Pump Drives

## Cement plants

- 2001 Project K.S.A.          Cement Mill Drive
- 1 x 7.300 kW, 900 rpm
- 2001 Project K.S.A.          Cement Kiln Drive
- 1 x 650 kW, 900 rpm
- 2003 Project Jordan          Cement Mill Drive
- 1 x 8.000 kW, 1.000 rpm
- 2003 Project Jordan          Cement Main Fan Drive
- 1 x 600 kW, 750 rpm
- 2004 Project UAE              Cement Main Fan Drive
- 1 x 250 kW, 3.000 rpm
- 2004 Project Germany      Cement Mill Drive
- 1 x 2.500 kW, 1.000 rpm
- 2004 Project Columbia      Raw Mill Drive
- 1 x 709 kW, 1.200 rpm

## Other Main Drives

- 2001 Project USA              Shredder Drive
- 1 x 6.000 kW, 514 rpm
- 2001 Project USA              Shredder Drive
- 1 x 6.000 kW, 514 rpm
- 2003 Project Venezuela      Fan Drive
- 1 x 700 kW, 1000 rpm
- 2001 Project USA              Fan Drive
- 1 x 6.000 kW, 514 rpm

## Complete Plant Supply

### 2001 Project Cement plant Italy

- Supply of a 65 tph Raw Mill for a cement plant

### 2006 Project Cement plant Bolivia

- Supply of a 400TPD Clinker Production line

### 2007 Project Steel factory Germany

- 2 x 4.500 kW Medium Voltage Frequency Inverter with commissioning and turn key installation

### 2007 Project Cement plant Bolivia

- Engineering and Supply of a complete 65 TPH Grinding plant





## Contact Details

Unitec Motoren, Inh. Torsten Seebeck  
Roentgenstrasse 1 B  
D – 30890 Barsinghausen  
- GERMANY –

Commercial Register Hannover HRA 100629

=====

Unitec Projects & Engineering GmbH  
Roentgenstrasse 1 B  
D – 30890 Barsinghausen  
- GERMANY –

Commercial Register Hannover HRB 202210

Managing Director:

Torsten Seebeck

Tel. +49 – 5105 – 77879 0  
Fax +49 – 5105 – 77879 20  
E-Mail [info@unitec-group.de](mailto:info@unitec-group.de)  
Website [www.unitec-group.de](http://www.unitec-group.de)

Unitec Group  
Roentgenstrasse 1 B  
D-30890 Barsinghausen  
Tel. +49 – 5105 – 77879 0  
Fax +49 – 5105 – 77879 20  
[www.unitec-group.de](http://www.unitec-group.de)